

WindowExpress Installation Guide

Welcome to the Associated Materials network of dealers!

This user guide will detail how to install Associated Materials' new order entry system, **WindowExpress**. It covers basic information you need to download WindowExpress and training materials, and get logged in.

Downloading WindowExpress

The first step in installing WindowExpress will be downloading an installer from the WindowExpress website:

[Download WindowExpress](#)

1

The installer will be found on the right-hand side in the link [Download WindowExpress](#)

If you are using Internet Explorer you will see this prompt. Click Run.

2

press is the powerful quoting application that handles site, and professional-looking quotes for your onically directly to AMI.

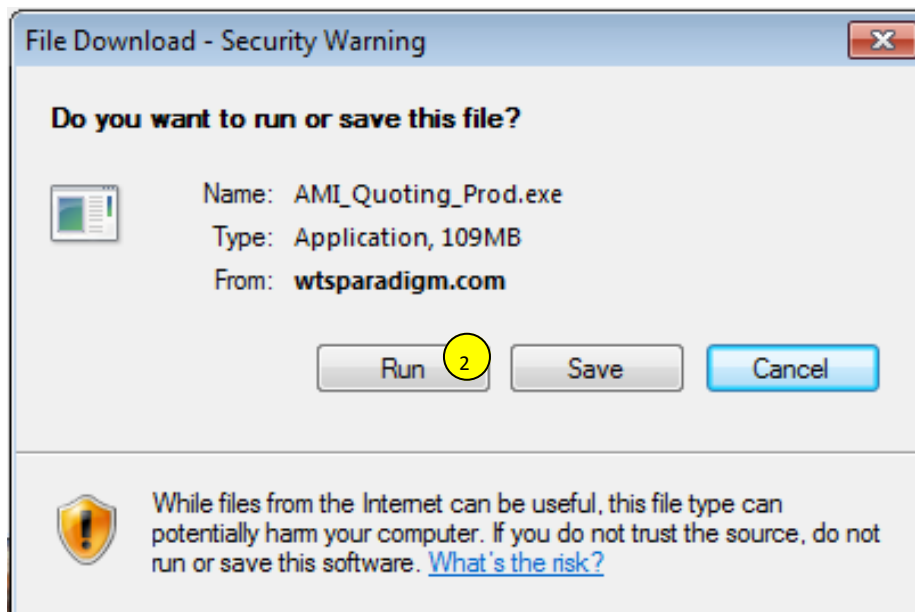


1

[Download WindowExpress](#)

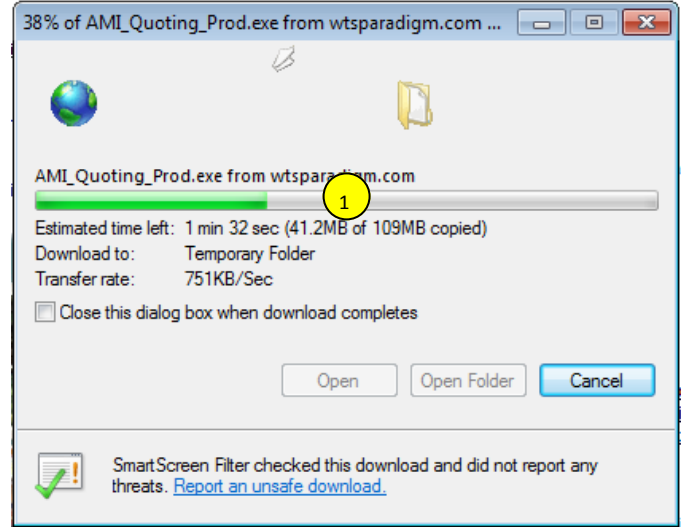
[Window Express Demonstration Videos](#)

[Window Express Quick Start Guide!](#)

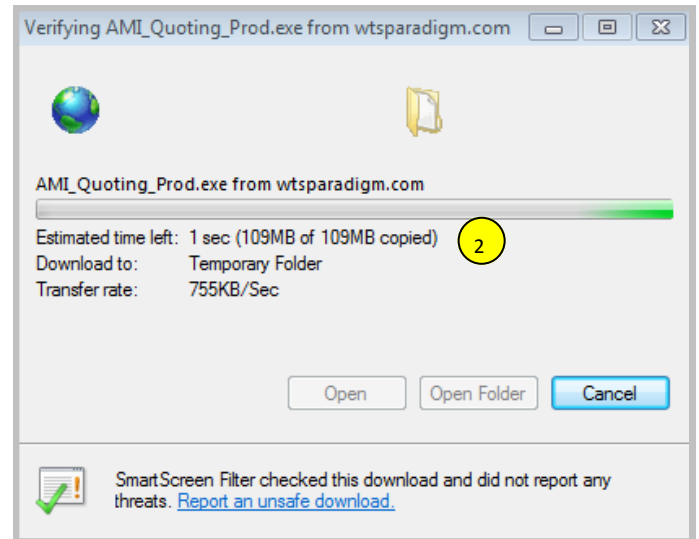


Downloading WindowExpress (cont.)

- 1 You will next see a progress window, which will let you know how long the download will take.



- 2 If the window stalls before completing, look to
- 3 the bottom task bar.



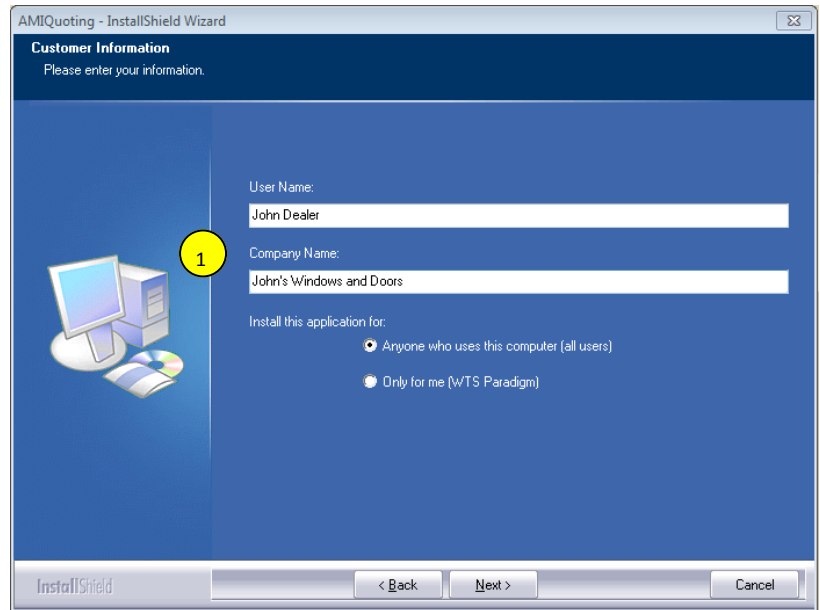
- 4 If you see a Windows Alert, open it and click Yes
- This will allow Microsoft to finish downloading the installer.



Downloading WindowExpress

After the installer is finished downloading, it will automatically start installing the application.

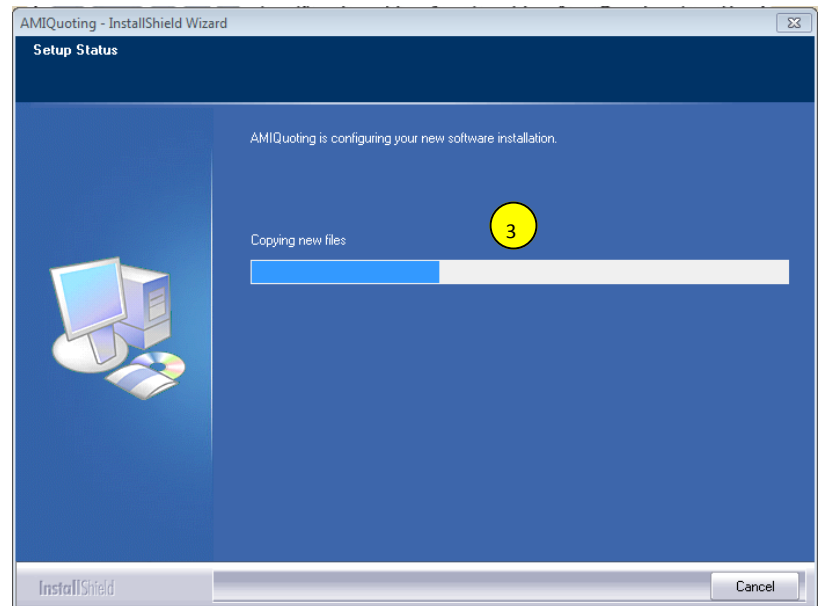
- 1 Fill in any demographic fields that appear.
Click the Next button to advance through the screens.



- 2 After the demographic fields are all filled in click the Install button.



- 3 A progress bar will start to let you know how far along the installation process is.



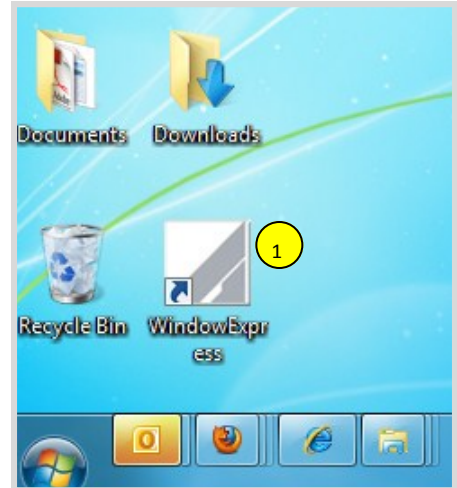
- 4 When the installation is complete, click Finish



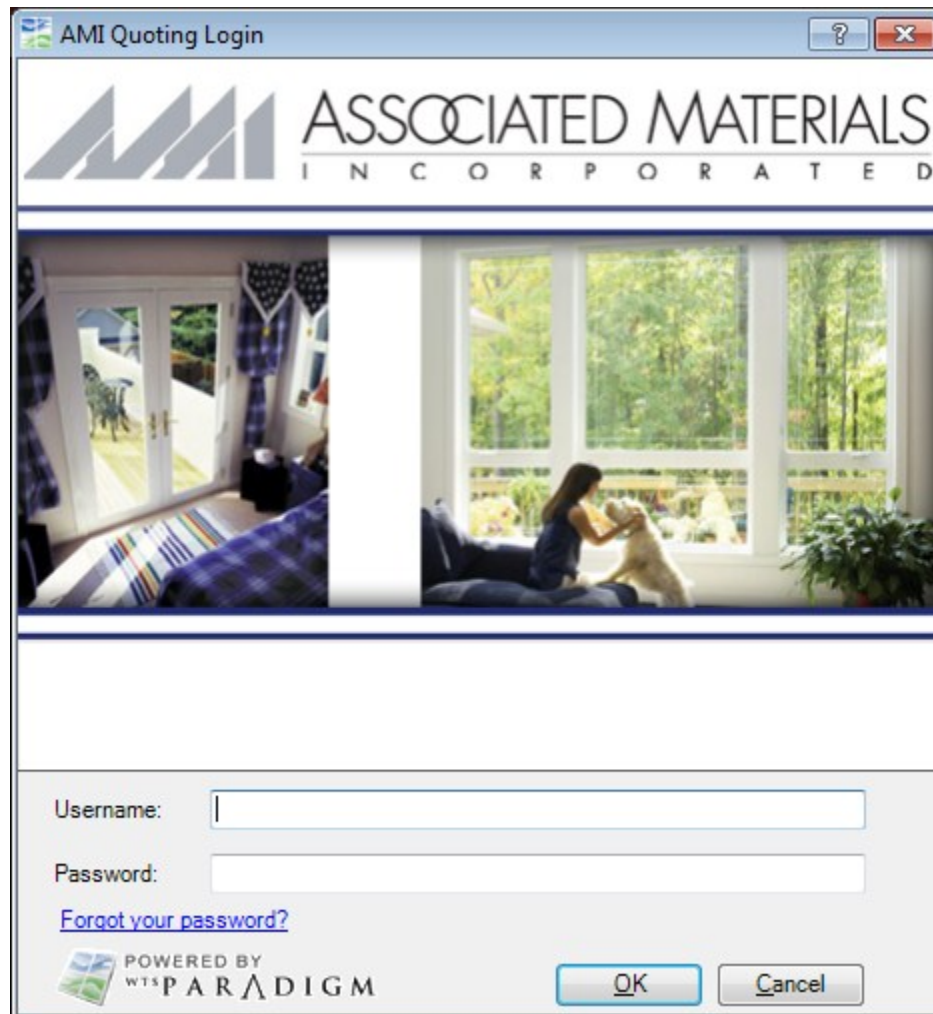
Logging in to WindowExpress

After downloading, you will want to log in. This will start the update process, and we will make sure your system is as up to date as possible—AMI may have made updates available before you installed Window Express.

The program can be launched from your desktop from a shortcut button that was created.



- 1 Double click on the WindowExpress icon, and the login screen will launch. Here you can enter the username and password AMI has provided for you.

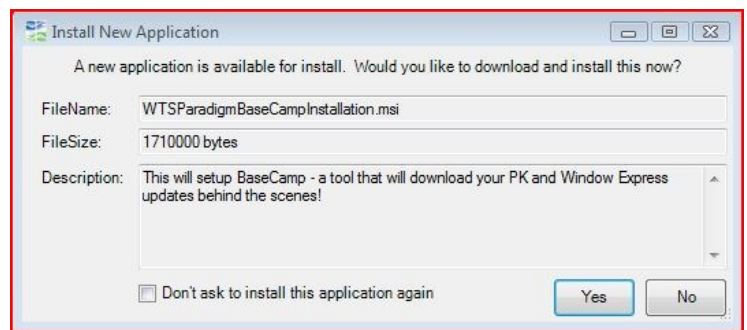


Installing Base Camp

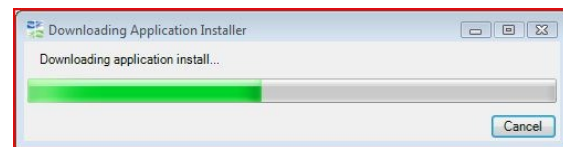
The first time you log in you will be prompted to download updates for WindowExpress. Part of this update will be installing a secondary program called **Base Camp**. If you ever need to reinstall BaseCamp, you can also download it from <http://wtsparadigm.com>.

Base Camp will find updates on the WindowExpress server, and apply them to your computer in the background. This drastically reduces login in times, since you won't be prompted to download updates when you first log in to WindowExpress in the morning.

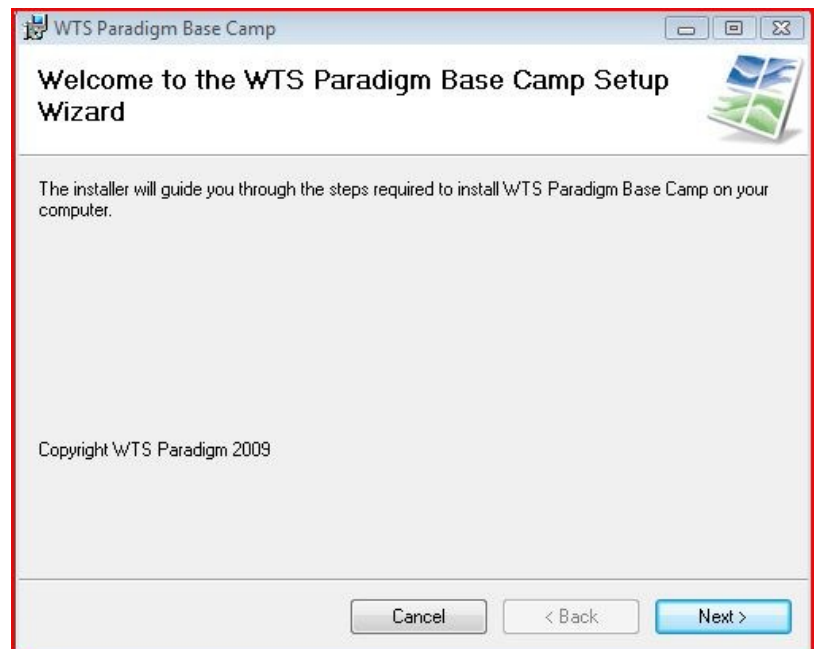
When you log in the first time, you will see this message appear. Click **Yes** to install Base Camp.



A progress bar will appear to let you know how far along the download is.



The Setup Wizard will open when the download is complete. Select **Next** to continue through the wizard.



Installing Base Camp (cont.)

On the License Agreement form, select the **I agree** option to activate the **Next** button to proceed with the installation.

On the next forms, click the Next options. These forms are the Select Installation Folder form, the User Account Control form, and the Confirm Installation form.

- 1 If at any point a Windows Alert form appears, open it and click **Allow**.



After the installation wizard finishes installing Base Camp, the Start Setup form opens. Click **Next**. This will perform a scan of your computer to find WindowExpress, and will add it to Base Camp's setting.

After the scan is complete, Base Camp will open. You will need to enter the username and password that you used to log in to WindowExpress here. Click Next when you are finished to complete the setup.

WTS Paradigm Base Camp

Username and Password Entry

Please fill out the Username and Password information for each WTS Paradigm application listed below and set prioritization. If any of these systems take advantage of network caching, the Base Camp service needs to be configured to allow it.

Copy Remove

Enabled	Client Name	Username	Password	Client Application Path	Prioritization
<input checked="" type="checkbox"/>	AMIQuoting			C:\Program Files\AMI\AMIQuoting\ParadigmPl...	<input type="button" value="↑"/> <input type="button" value="↓"/>

WTS Paradigm Applications highlighted in red are not on a recent enough version to be optimized. A software upgrade to the manufacturer is required (Min Versions: 2.0.3017.152, 2.0.3018.93, 3.5.3019.35 or 3.5.3020 and above).

Step 3 of 4

Cancel Back Next

Viewing Training Videos

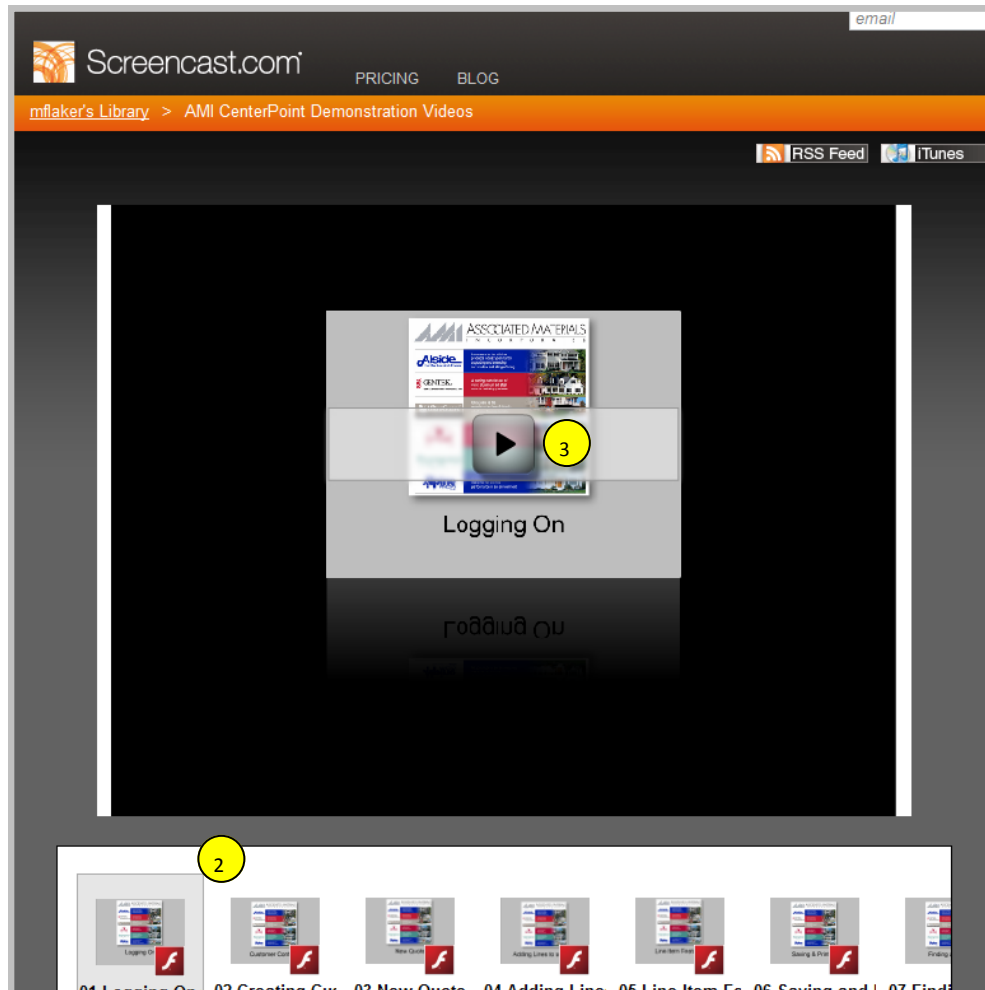
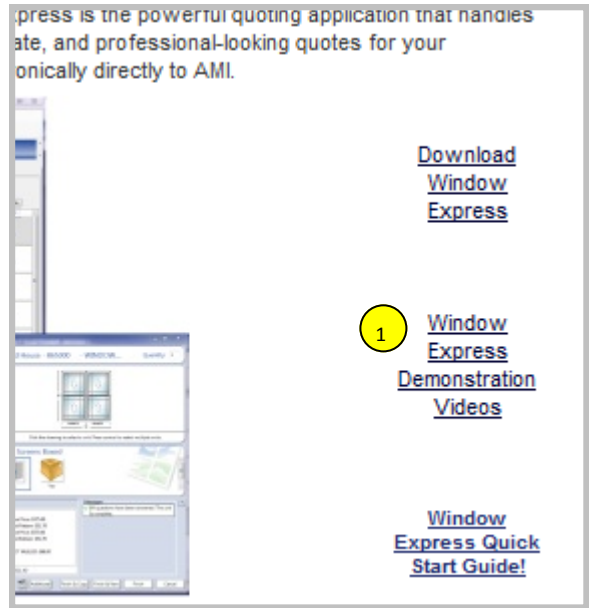
The training videos are available on WindowExpress web-site.

1 On the right hand side, below the link for the installer, is a second link to the videos. Click on the [WindowExpress Demonstration Videos](#) link.

This link will bring you to the location of the videos. You can watch them from the web site, without downloading them to your computer.

2 The videos available on listed underneath the screen. Click on the one you would like to watch from the available list.

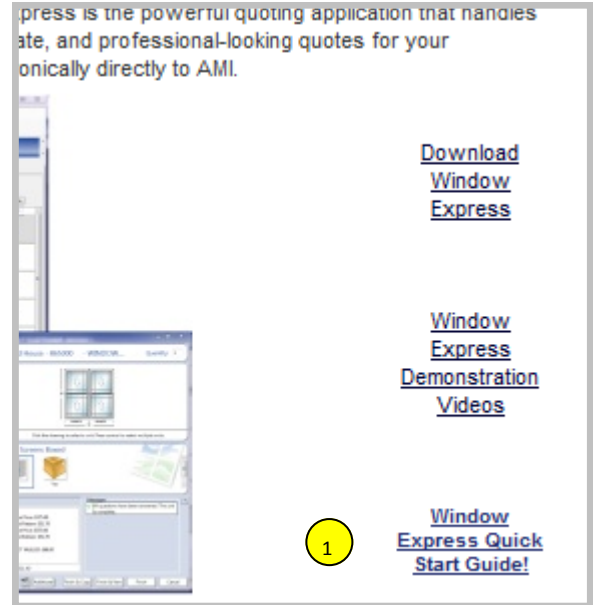
3 Then **click the play button**. No login is required.



Downloading the WindowExpress Guide

There is also a printable guide that is available from the WindowExpress website. This will be helpful to you when you are starting out on WindowExpress.

- 1 Clicking on the [WindowExpress Quick Start Guide](#) link will open the guides in your Internet browser.



- 2 You can then click the print button to print them.

